



NOW OPEN BY APPOINTMENT

# STUNNING NEW SHOW HOMES

RICHMOND SQUARE  
RICHMOND UPON THAMES



## RICHMOND SQUARE

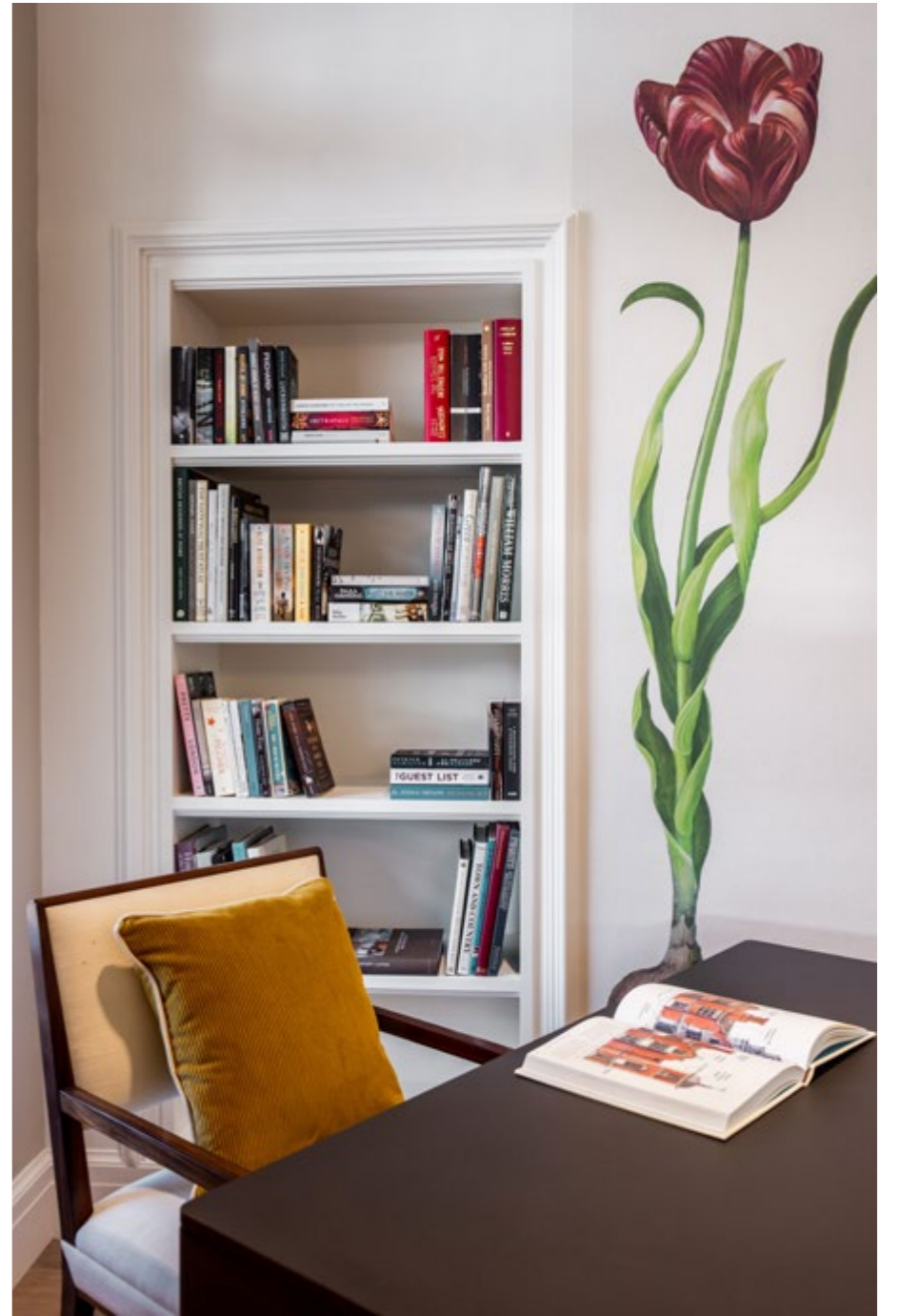
Richmond Square presents 54 exquisite and individually styled apartments, penthouses and loft apartments.

Surrounded by green open spaces, many of the apartments benefit from views outwards over the Old Deer Park, north towards Kew Gardens, east towards Central London and inward over terraces and a tranquil landscaped courtyard.

Georgian, Victorian, Edwardian and Art Deco façades have been enhanced by Twenty First Century renovation. Richmond Square is destination living at its best.

AN EXCLUSIVE DEVELOPMENT  
BY RER LONDON AND BLUE COAST CAPITAL















ONE BEDROOM  
APARTMENT

E03



- Stylish apartment with impressive 3.7m floor to ceiling heights
- Open plan living, kitchen and dining area with large retained timber sash windows
- Double bedroom with fitted wardrobes
- Dual use ensuite bathroom and separate shower accessed from the bedroom or living space

LIVING AREA  
6.1m x 4.8m | 20'0" x 15'7"

BEDROOM  
3.9m x 3.8m | 12'7" x 12'4"

APARTMENT AREA  
53m<sup>2</sup> | 570ft<sup>2</sup>

UPPER GROUND  
FLOOR



ONE BEDROOM  
APARTMENT

E04

- Light-filled open plan living area
- Fully glazed bay window to living, dining and kitchen area to maximise light
- Further bay window to bedroom
- Luxurious master ensuite bathroom with separate shower
- Fitted wardrobe to bedroom
- 3.5m floor to ceiling height



LIVING AREA  
6.4m x 4.9m | 20'9" x 16'0"

BEDROOM  
4.2m x 3.3m | 13'7" x 10'8"

APARTMENT AREA  
50m<sup>2</sup> | 538ft<sup>2</sup>

UPPER GROUND  
FLOOR



Please refer to the schedule for individual apartment ceiling heights.  
Room sizes are approximate. The layout of certain apartments and communal areas may vary and are subject to change.

Please refer to the schedule for individual apartment ceiling heights.  
Room sizes are approximate. The layout of certain apartments and communal areas may vary and are subject to change.

# ONE BEDROOM APARTMENT

## E05

- Elegant corner apartment
- Open plan living, dining and kitchen area with fully glazed single bay window to maximize space and light
- Double bedroom with built in wardrobes
- Luxurious master ensuite bathroom with separate shower
- 3.5m floor to ceiling height



LIVING AREA  
8.1m x 7.3m | 26'5" x 23'9"

BEDROOM  
4.2m x 3.0m | 13'7" x 9'8"

APARTMENT AREA  
50m<sup>2</sup> | 538ft<sup>2</sup>

### UPPER GROUND FLOOR



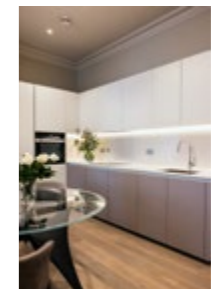
Please refer to the schedule for individual apartment ceiling heights.

Room sizes are approximate. The layout of certain apartments and communal areas may vary and are subject to change.

# ONE BEDROOM APARTMENT

## E06

- Open plan living area with split-level steps /stair from entrance hall and generous 2.3m floor to ceiling height
- 2.8m floor to ceiling height to kitchen
- Luxurious master ensuite bathroom with separate shower
- Fitted wardrobe to double bedroom



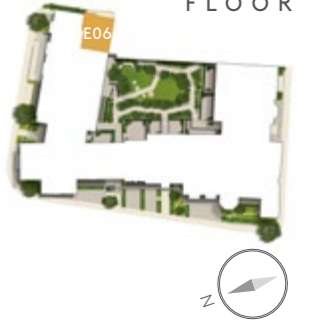
LIVING / DINING  
4.9m x 4.1m | 16'0" x 13'4"

KITCHEN  
4.1m x 2.7m | 13'4" x 8'8"

BEDROOM  
3.5m x 3.2m | 11'4" x 10'4"

APARTMENT AREA  
50m<sup>2</sup> | 538ft<sup>2</sup>

### UPPER GROUND FLOOR



Please refer to the schedule for individual apartment ceiling heights.

Room sizes are approximate. The layout of certain apartments and communal areas may vary and are subject to change.

# ONE BEDROOM APARTMENT

## E07



- Stunning one bedroom apartment facing on to private landscaped courtyard
- Master bedroom with ensuite bathroom and separate shower
- Spacious open plan living area with 3.5m ceiling height
- Full height patio doors and glazing
- Large terrace overlooking Richmond Square gardens
- Fitted wardrobes to bedroom



LIVING AREA  
6.2m x 4.9m | 20'3" x 16'0"

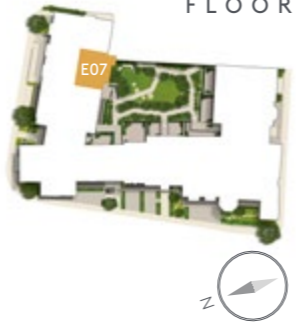
BEDROOM  
3.8m x 3.6m | 12'4" x 11'8"

TERRACE  
6.5m x 2.0m | 21'3" x 6'5"

APARTMENT AREA  
52m<sup>2</sup> | 559ft<sup>2</sup>

TERRACE AREA  
9m<sup>2</sup> | 96ft<sup>2</sup>

### UPPER GROUND FLOOR



# ONE BEDROOM APARTMENT

## E08

- Open plan living area facing on to private landscaped courtyard with 3.7m floor to ceiling height
- Double doors to Juliet overlooking courtyard from living area
- Fitted wardrobes to bedroom
- Dual use ensuite bathroom and separate shower accessed from the bedroom or living space



LIVING AREA  
6.1m x 4.8m | 20'0" x 15'7"

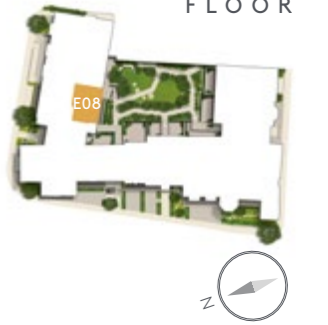
BEDROOM  
4.0m x 3.6m | 13'1" x 11'8"

APARTMENT AREA  
50m<sup>2</sup> | 538ft<sup>2</sup>

Please refer to the schedule for individual apartment ceiling heights.

Room sizes are approximate. The layout of certain apartments and communal areas may vary and are subject to change.

### UPPER GROUND FLOOR



Please refer to the schedule for individual apartment ceiling heights.

Room sizes are approximate. The layout of certain apartments and communal areas may vary and are subject to change.

# ONE BEDROOM APARTMENT

## E09

- Elegant open plan apartment featuring large retained timber sash windows
- Fitted wardrobes to bedroom and dual use ensuite bathroom and separate shower with additional access to the living area
- 2.7m floor to ceiling height



LIVING AREA  
6.1m x 5.3m | 20'0" x 17'3"

BEDROOM  
3.9m x 3.7m | 12'7" x 12'1"

APARTMENT AREA  
53m<sup>2</sup> | 570ft<sup>2</sup>

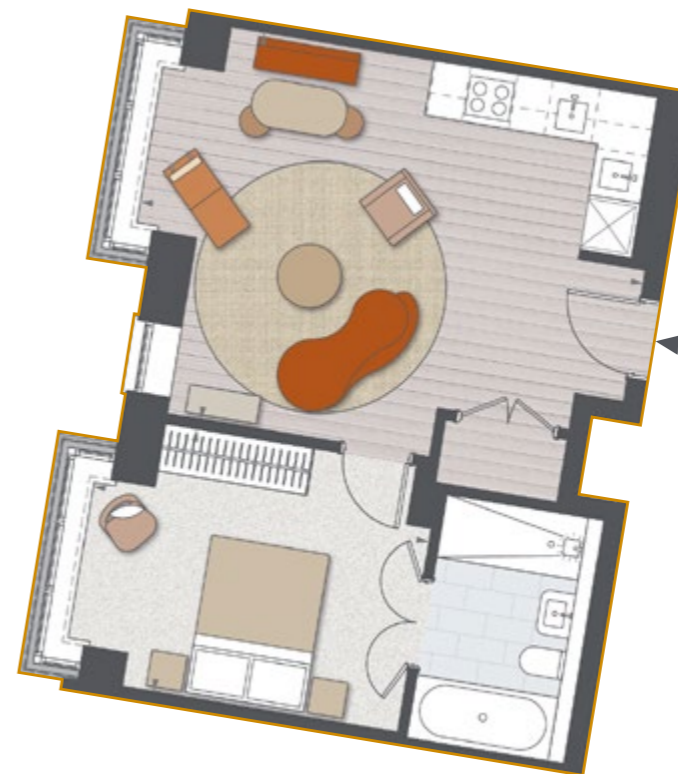
### FIRST FLOOR



# ONE BEDROOM APARTMENT

## E10

- Light-filled open plan living area
- Fully glazed bay window to living, dining and kitchen area to maximise light
- Further bay window to bedroom
- Double doors from bedroom to ensuite bathroom and separate shower
- 2.7m floor to ceiling height



LIVING AREA  
6.4m x 4.9m | 20'9" x 16'0"

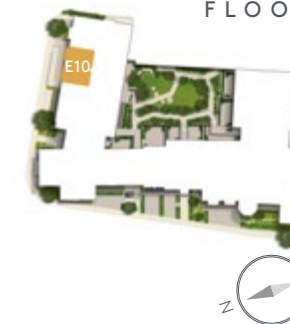
BEDROOM  
4.2m x 3.3m | 13'7" x 10'8"

APARTMENT AREA  
50m<sup>2</sup> | 538ft<sup>2</sup>

Please refer to the schedule for individual apartment ceiling heights.  
Room sizes are approximate. The layout of certain apartments and communal areas may vary and are subject to change.

Please refer to the schedule for individual apartment ceiling heights.  
Room sizes are approximate. The layout of certain apartments and communal areas may vary and are subject to change.

### FIRST FLOOR



# ONE BEDROOM APARTMENT

## E11

- Elegant open plan apartment featuring large retained timber sash windows
- Large double doors open on to balcony area
- Fitted wardrobes to bedroom
- Luxurious master ensuite bathroom with separate shower
- 2.7m floor to ceiling height



LIVING AREA  
7.7m x 7.3m | 25'2" x 23'9"

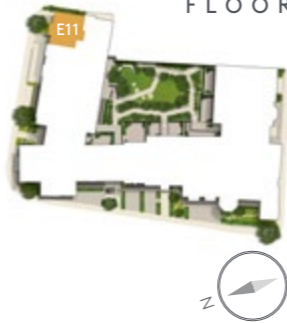
BEDROOM  
4.2m x 3.0m | 13'7" x 9'8"

BALCONY  
2.1m x 0.3m | 6'8" x 0'9"

APARTMENT AREA  
49m<sup>2</sup> | 527ft<sup>2</sup>

BALCONY AREA  
0.75m<sup>2</sup> | 8ft<sup>2</sup>

### FIRST FLOOR



# ONE BEDROOM APARTMENT

## E12

- Open plan living area with balcony area from double doors
- Master bedroom with separate walk in dressing area
- Luxurious master ensuite bathroom with separate shower
- 2.6m floor to ceiling height



LIVING AREA  
7.7m x 3.8m | 25'2" x 12'4"

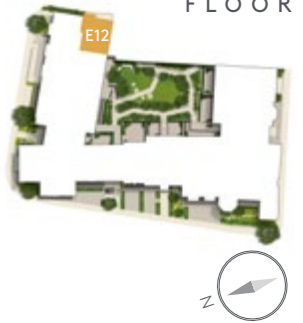
BEDROOM  
4.6m x 3.1m | 15'0" x 10'1"

BALCONY  
2.1m x 0.3m | 6'8" x 0'9"

APARTMENT AREA  
50m<sup>2</sup> | 538ft<sup>2</sup>

BALCONY AREA  
0.75m<sup>2</sup> | 8ft<sup>2</sup>

### FIRST FLOOR



Please refer to the schedule for individual apartment ceiling heights.

Room sizes are approximate. The layout of certain apartments and communal areas may vary and are subject to change.

Please refer to the schedule for individual apartment ceiling heights.

Room sizes are approximate. The layout of certain apartments and communal areas may vary and are subject to change.

# ONE BEDROOM APARTMENT

## E13

- Sits within the newly built Art Deco part of Evelyn house
- Open plan living area with Juliet balcony
- Views over the private landscaped courtyard
- Fitted wardrobes to bedroom
- Dual use ensuite bathroom and separate shower accessed from the bedroom or living space
- Living area floor to ceiling height 2.7m



LIVING AREA  
6.0m x 4.9m | 19'6" x 16'0"

BEDROOM  
3.8m x 3.6m | 12'4" x 11'8"

APARTMENT AREA  
52m<sup>2</sup> | 560ft<sup>2</sup>

Please refer to the schedule for individual apartment ceiling heights.  
Room sizes are approximate. The layout of certain apartments and communal areas may vary and are subject to change.

### FIRST FLOOR



# ONE BEDROOM APARTMENT

## E16

- Elegant open plan living area with retained tall feature window inset into ceiling level
- Master bedroom with large enclosed dressing space and double doors to ensuite bathroom and separate shower



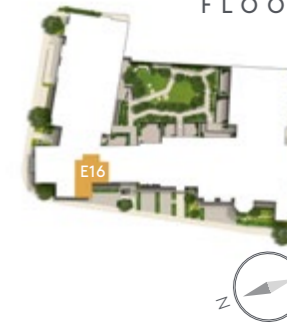
LIVING AREA  
6.0m x 5.3m | 19'6" x 17'3"

BEDROOM  
6.3m x 2.9m | 20'6" x 9'5"

APARTMENT AREA  
50m<sup>2</sup> | 538ft<sup>2</sup>

Please refer to the schedule for individual apartment ceiling heights.  
Room sizes are approximate. The layout of certain apartments and communal areas may vary and are subject to change.

### FIRST FLOOR



# ONE BEDROOM APARTMENT

## E18

- Stylish apartment with generous 2.6m floor to ceiling height in the living spaces
- Open plan living, kitchen and dining area with large retained timber sash windows
- Dual use ensuite bathroom and separate shower accessed from the bedroom or living space
- Fitted wardrobes to bedroom



LIVING AREA  
6.1m x 5.3m | 20'0" x 17'3"

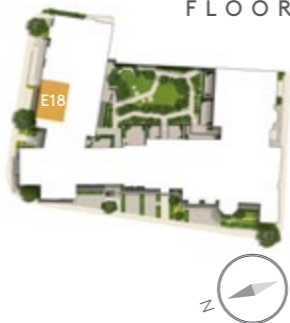
BEDROOM  
3.9m x 3.7m | 12'7" x 12'1"

APARTMENT AREA  
53m<sup>2</sup> | 570ft<sup>2</sup>

Please refer to the schedule for individual apartment ceiling heights.

Room sizes are approximate. The layout of certain apartments and communal areas may vary and are subject to change.

## SECOND FLOOR



# ONE BEDROOM APARTMENT

## E19

- Light-filled open plan living area
- Fully glazed bay window to living, dining and kitchen area to maximise light
- Further bay window to bedroom
- Fitted wardrobes to bedroom
- Double doors from bedroom to ensuite bathroom and separate shower
- 2.6m floor to ceiling height



LIVING AREA  
5.7m x 4.4m | 18'7" x 14'4"

BEDROOM  
3.5m x 3.3m | 11'4" x 10'8"

BALCONY  
2.1m x 0.3m | 6'8" x 0'9"

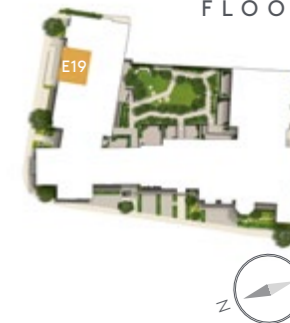
APARTMENT AREA  
43m<sup>2</sup> | 462ft<sup>2</sup>

BALCONY AREA  
1.5m<sup>2</sup> | 16ft<sup>2</sup>

Please refer to the schedule for individual apartment ceiling heights.

Room sizes are approximate. The layout of certain apartments and communal areas may vary and are subject to change.

## SECOND FLOOR



ONE BEDROOM  
APARTMENT

R02



Line and shading denotes bridge above

- Beautiful courtyard facing apartment accessed from Concierge lobby via private ornate stone staircase (exclusive to apartments R02 and R03)

LIVING AREA  
8.0m x 4.1m | 26'2" x 13'4"

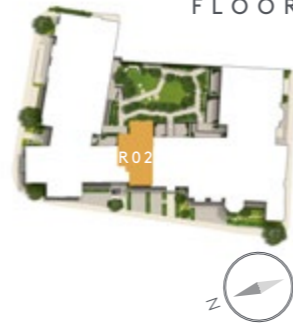
BEDROOM  
4.8m x 2.6m | 15'7" x 8'5"

TERRACE  
8.3m x 5.3m | 27'2" x 17'3"

APARTMENT AREA  
54m<sup>2</sup> | 581ft<sup>2</sup>

TERRACE AREA  
35m<sup>2</sup> | 376ft<sup>2</sup>

GROUND  
FLOOR



- Large open plan living area with new French doors onto large external courtyard
- Bedroom with fitted wardrobes and bathroom with separate shower adjacent
- Kitchen and dining area with utility space
- 2.5m floor to ceiling height



Please refer to the schedule for individual apartment ceiling heights.

Room sizes are approximate. The layout of certain apartments and communal areas may vary and are subject to change.

ONE BEDROOM  
APARTMENT

S01



- Spacious courtyard facing living / dining area with generous ceiling heights up to 2.6m
- Archway from living space into kitchen area

LIVING AND DINING  
6.4m x 3.3m | 20'9" x 10'8"

KITCHEN  
4.2m x 2.5m | 13'7" x 8'2"

BEDROOM  
4.2m x 2.7m | 13'7" x 8'8"

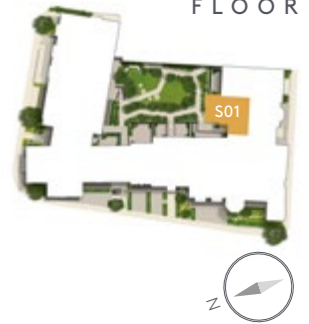
TERRACE  
6.5m x 3.3m | 21'3" x 10'8"



APARTMENT AREA  
50m<sup>2</sup> | 538ft<sup>2</sup>

TERRACE AREA  
21m<sup>2</sup> | 226ft<sup>2</sup>

GROUND  
FLOOR



- Master bedroom with fitted wardrobes and ensuite bathroom with separate shower
- Large private terrace accessed from master bedroom and living area through feature glazed, timber framed patio doors

Please refer to the schedule for individual apartment ceiling heights.

Room sizes are approximate. The layout of certain apartments and communal areas may vary and are subject to change.



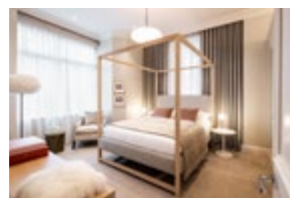
# ONE BEDROOM APARTMENT

## S02

- Courtyard facing spacious apartment with generous 2.6m floor to ceiling heights
- Large private terrace accessed from master bedroom and living area through feature glazed, timber framed patio doors



- Master bedroom with fitted wardrobes and ensuite bathroom with separate shower



LIVING AREA  
8.7m x 4.1m | 28'5" x 13'4"

BEDROOM  
4.8m x 3.1m | 15'7" x 10'1"

TERRACE  
6.5m x 2.5m | 21'3" x 8'2"

APARTMENT AREA  
55m<sup>2</sup> | 592ft<sup>2</sup>

TERRACE AREA  
15m<sup>2</sup> | 161ft<sup>2</sup>

Please refer to the schedule for individual apartment ceiling heights.

Room sizes are approximate. The layout of certain apartments and communal areas may vary and are subject to change.

### GROUND FLOOR



# ONE BEDROOM APARTMENT

## S03

- Elegant apartment featuring two private outside spaces
- Spacious open plan living, dining and kitchen area with double doors from bay window to private terrace
- Master bedroom with fitted wardrobes
- Second private terrace accessed from bedroom
- Stylish bathroom and separate shower
- 2.6m floor to ceiling height in living spaces



LIVING AREA  
6.3m x 5.5m | 20'6" x 18'0"

BEDROOM  
4.5m x 4.3m | 14'7" x 14'1"

TERRACE ONE  
5.7m x 1.7m | 18'7" x 5'5"

TERRACE TWO  
2.6m x 2.1m | 8'5" x 6'8"

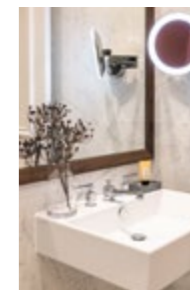
APARTMENT AREA  
57m<sup>2</sup> | 613ft<sup>2</sup>

TERRACE AREA  
11m<sup>2</sup> | 118ft<sup>2</sup>

Please refer to the schedule for individual apartment ceiling heights.

Room sizes are approximate. The layout of certain apartments and communal areas may vary and are subject to change.

### GROUND FLOOR



# STUDIO APARTMENT S06

- Stylish open plan studio apartment with large windows and Juliet balcony overlooking the landscaped courtyard gardens
- Built in wardrobes to bedroom area
- Luxurious bathroom and separate shower
- 2.9m floor to ceiling height



LIVING AREA  
6.8m x 6.1m | 22'3" x 20'0"

APARTMENT AREA  
40m<sup>2</sup> | 430ft<sup>2</sup>

## UPPER GROUND FLOOR



# ONE BEDROOM APARTMENT S07

- Wonderful open plan living area with impressive 2.9m ceiling height
- Large windows facing landscaped courtyard
- Juliet balcony
- Bedroom with double doors to ensuite bathroom with separate shower

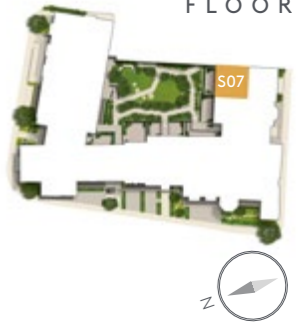


LIVING AREA  
7.1m x 4.2m | 23'2" x 13'7"

BEDROOM  
4.9m x 3.3m | 16'0" x 10'8"

APARTMENT AREA  
51m<sup>2</sup> | 549ft<sup>2</sup>

## UPPER GROUND FLOOR



Please refer to the schedule for individual apartment ceiling heights.  
Room sizes are approximate. The layout of certain apartments and communal areas may vary and are subject to change.

Please refer to the schedule for individual apartment ceiling heights.  
Room sizes are approximate. The layout of certain apartments and communal areas may vary and are subject to change.

# ONE BEDROOM APARTMENT

## S09

- Stylish apartment with generous 3.3m floor to ceiling heights in the living spaces
- Open plan living, kitchen and dining area with retained tall feature windows
- Bedroom with full width built in wardrobes
- Luxurious bathroom with separate shower

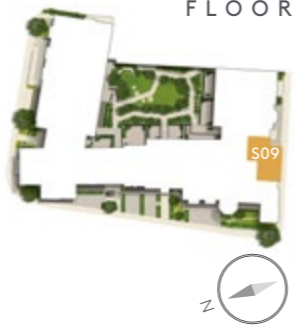


LIVING AREA  
7.4m x 7.2m | 24'2" x 23'6"

BEDROOM  
4.4m x 2.8m | 14'4" x 9'1"

APARTMENT AREA  
52m<sup>2</sup> | 559ft<sup>2</sup>

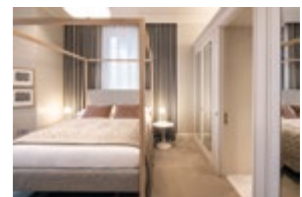
# UPPER GROUND FLOOR



# ONE BEDROOM APARTMENT

## S11

- Stunning apartment with large retained bay windows facing on to Kew Foot Road
- Entrance lobby area
- Spacious open plan reception room with 3.1m ceiling height



- Bedroom with built in wardrobes and ensuite bathroom and separate shower

LIVING AREA  
8.62m x 5.47m | 28'2" x 17'9"

BEDROOM  
5.14m x 3.96m | 16'8" x 12'9"

APARTMENT AREA  
69m<sup>2</sup> | 742ft<sup>2</sup>

Please refer to the schedule for individual apartment ceiling heights.

Room sizes are approximate. The layout of certain apartments and communal areas may vary and are subject to change.

Please refer to the schedule for individual apartment ceiling heights.

Room sizes are approximate. The layout of certain apartments and communal areas may vary and are subject to change.

# ONE BEDROOM APARTMENT

## S13

- Spacious open plan living, dining and kitchen space with 3m floor to ceiling height and Juliet balcony overlooking the landscaped gardens
- Dual use ensuite bathroom and separate shower accessed from the bedroom or living space
- Fitted wardrobes to bedroom



LIVING AREA  
6.4m x 5.8m | 20'9" x 19'0"

BEDROOM  
4.2m x 2.7m | 13'7" x 8'8"

APARTMENT AREA  
50m<sup>2</sup> | 538ft<sup>2</sup>

Please refer to the schedule for individual apartment ceiling heights.

Room sizes are approximate. The layout of certain apartments and communal areas may vary and are subject to change.

### FIRST FLOOR



# ONE BEDROOM APARTMENT

## S14

- Open plan living, dining and kitchen space with 3m floor to ceiling heights and Juliet balcony overlooking the landscaped gardens
- Bedroom with built in wardrobes and double doors on to ensuite bathroom and separate shower



LIVING AREA  
7.1m x 4.2m | 23'2" x 13'7"

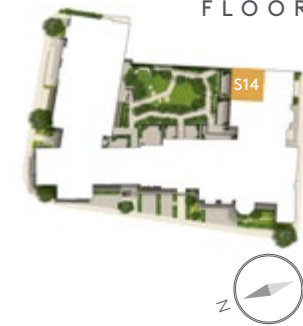
BEDROOM  
4.9m x 2.9m | 16'0" x 9'5"

APARTMENT AREA  
50m<sup>2</sup> | 538ft<sup>2</sup>

Please refer to the schedule for individual apartment ceiling heights.

Room sizes are approximate. The layout of certain apartments and communal areas may vary and are subject to change.

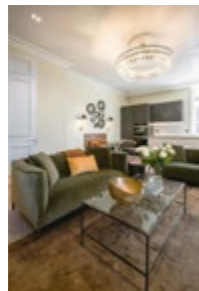
### FIRST FLOOR



# ONE BEDROOM APARTMENT

## S20

- Large open plan living, kitchen and dining space with large windows overlooking the landscaped gardens
- Bedroom with built in wardrobes and dual use ensuite bathroom and separate shower accessed from the bedroom and living space
- 2.6m floor to ceiling height in living spaces



LIVING AREA  
6.5m x 5.8m | 21'3" x 19'0"

BEDROOM  
4.3m x 2.7m | 14'1" x 8'8"

APARTMENT AREA  
50m<sup>2</sup> | 538ft<sup>2</sup>

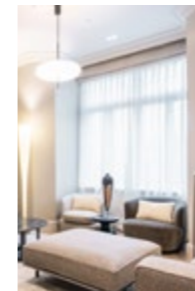
### SECOND FLOOR



# ONE BEDROOM APARTMENT

## S21

- Open plan living, dining and kitchen space with 2.6m floor to ceiling heights and large windows overlooking the landscaped gardens
- Bedroom with built in wardrobes and double doors on to ensuite bathroom and separate shower

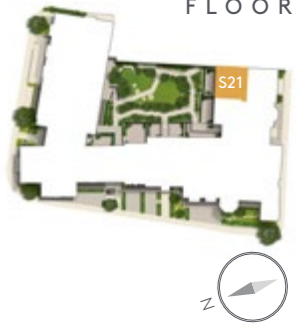


LIVING AREA  
7.2m x 4.2m | 23'6" x 13'7"

BEDROOM  
4.9m x 2.9m | 16'0" x 9'5"

APARTMENT AREA  
50m<sup>2</sup> | 538ft<sup>2</sup>

### SECOND FLOOR



Please refer to the schedule for individual apartment ceiling heights.

Room sizes are approximate. The layout of certain apartments and communal areas may vary and are subject to change.

Please refer to the schedule for individual apartment ceiling heights.

Room sizes are approximate. The layout of certain apartments and communal areas may vary and are subject to change.



STUNNING NEW SHOW HOMES  
NOW OPEN BY APPOINTMENT

BOOK YOUR PRIVATE  
VIEWING TODAY



RICHMOND  
SQUARE



### Elegant new homes in Richmond upon Thames

A blend of renovation and new build ■ High ceilings, terraces and views  
Beautiful interiors ■ New landscaped square ■ Concierge service

Apartments from £699,000.

0203 369 0169

[sales@richmondsq.co.uk](mailto:sales@richmondsq.co.uk)

Richmond Square  
Kew Foot Road  
Richmond TW9 2TE



AN EXCLUSIVE DEVELOPMENT BY RER LONDON AND BLUE COAST CAPITAL  
Prices correct at time of publication. Images of show home photography are indicative only.

[richmondsq.co.uk](http://richmondsq.co.uk)